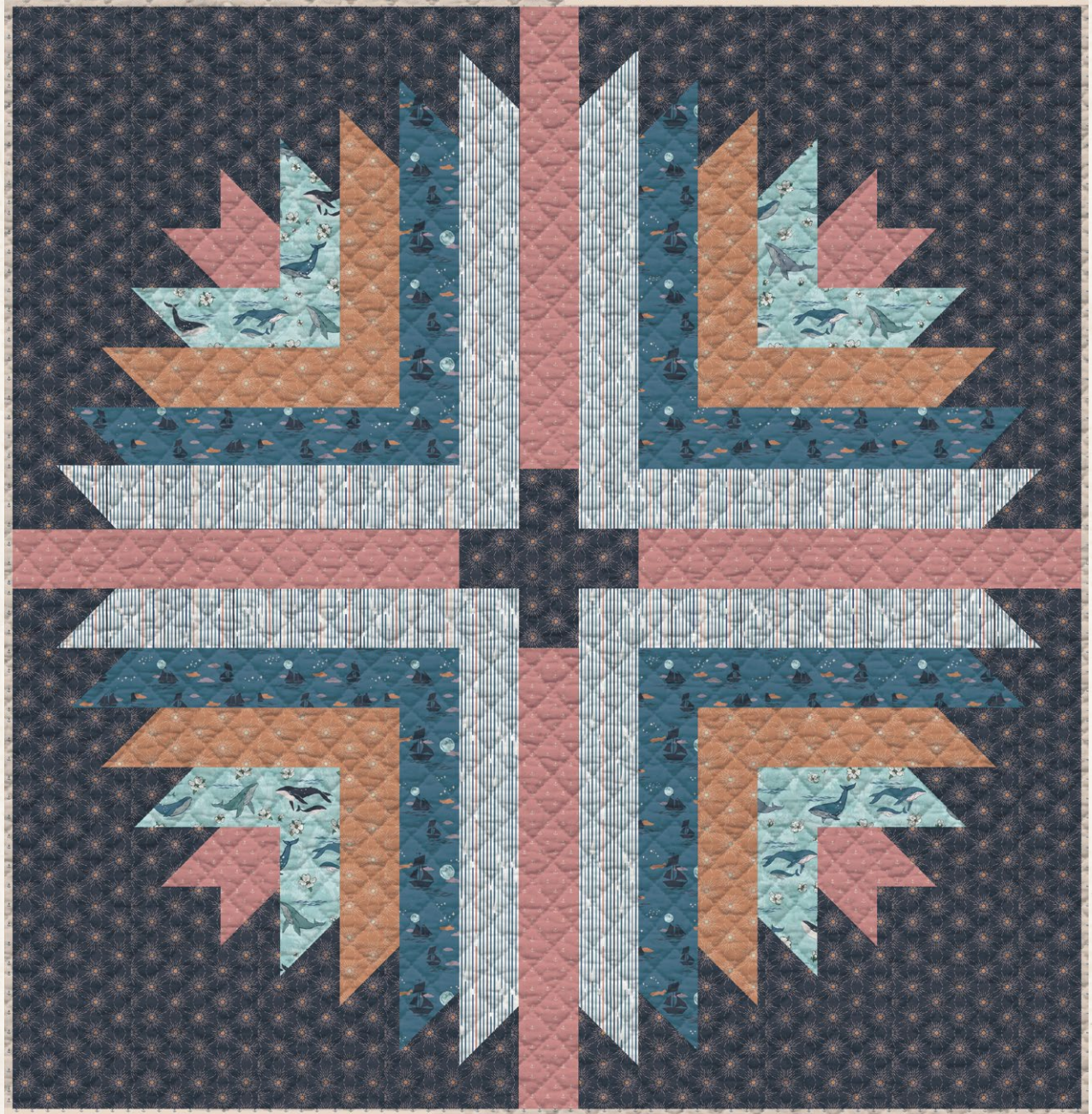


X
X
X
X
X
X
X
X
X
X
X
X

*polar
compass*



FREE PATTERN

XXXXXXXXXXXXXXXXXXXXXXXXXX



polar compass

QUILT DESIGNED BY MAUREEN CRACKNELL

ENCHANTED VOYAGE

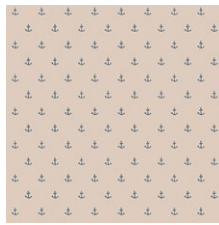
FABRICS DESIGNED BY MAUREEN CRACKNELL



NORTH WATERS



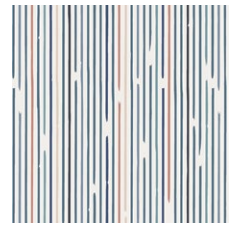
ENV-61780
UNDERWATER ENCHANT SOLAR



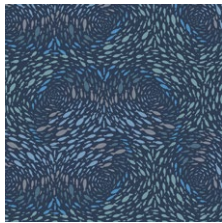
ENV-61781
NAUTIQUE SPELL SAND



ENV-61782
SEAHORSE MAGIC DEEP



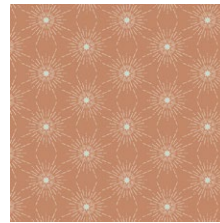
ENV-61783
HIGH TIDE DAY



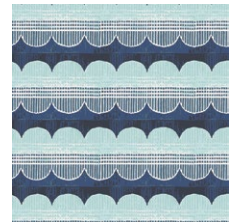
ENV-61784
SALTWATER STREAM DIM



ENV-61785
OFFSHORE DREAM SHADOW



ENV-61786
NORTH STAR SHINE

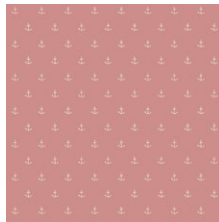


ENV-61787
WINWARD REFLECTION

SOUTH WATERS



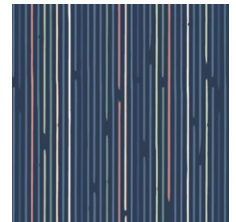
ENV-71780
UNDERWATER ENCHANT LUNAR



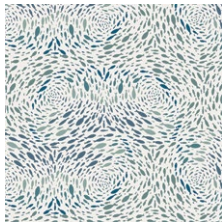
ENV-71781
NAUTIQUE SPELL BLUSH



ENV-71782
SEAHORSE MAGIC SHALLOW



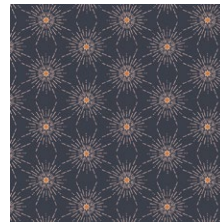
ENV-71783
HIGH TIDE NIGHT



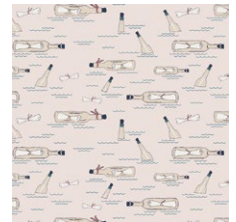
ENV-71784
SALTWATER STREAM CLEAR



ENV-71785
OFFSHORE DREAM BREEZE



ENV-71786
NORTH STAR GLOOM



ENV-71788
OCEAN NOTES





FINISHED SIZE | 72" x 72"

FABRIC REQUIREMENTS

Fabric A	ENV-61783	1 1/3 yd.
Fabric B	ENV-61785	3/4 yd.
Fabric C	ENV-61786	3/4 yd.
Fabric D	ENV-61780	3/4 yd.
Fabric E	ENV-71781	1 1/8 yd.
Fabric F	ENV-71786	2 3/4 yd.
Fabric G	ENV-61781	3/8 yd.

BACKING FABRIC

ENV-71784 4 1/2 yds. *(suggested)*

BINDING FABRIC

ENV-61781 (Fabric G) *(included)*

CUTTING DIRECTIONS

1/4" seam allowances are included.
WOF means width of fabric.

Fabric A

- Four (4) Strips of 4 1/2" x 28 1/2"
- Four (4) Strips of 24 1/2" X 4 1/2"
- Eight (8) 4 7/8 Squares (Keep in mind the direction of the fabric)

Fabric B

- Four (4) Strips of 4 1/2" x 22 1/2"
- Four (4) Strips of 18 1/2" X 4 1/2"
- Eight (8) 4 7/8 Squares (Keep in mind the direction of the fabric)

Fabric C

- Four (4) Strips of 16 1/2" x 4 1/2"
- Four (4) Strips of 12 1/2" X 4 1/2"
- Eight (8) 4 7/8 Squares

Fabric D

- Eight (8) 4 7/8 Squares (Keep in mind the direction of the fabric)
- Four (4) Strips of 10 1/2" x 4 1/2"
- Four (4) Strips of 4 1/2" x 6 1/2"

Fabric E

- Four (4) 4 1/2" Squares
- Four (4) 4 7/8" Squares
- Two (2) 30 1/2 x 4 1/2 (Keep in mind the direction of the fabric)
- Two (2) 4 1/2 x 30 1/2 (Keep in mind the direction of the fabric)

Fabric F

- Thirty Six (36) 4 7/8" x 4 7/8" Squares
- Eight (8) 10 1/2" x 4 1/2" Rectangles
- Eight (8) 8 1/2" x 4 1/2" Rectangles
- Eight (8) 6 1/2" x 4 1/2" Rectangles
- Eight (8) 2 1/2" x 4 1/2" Rectangles
- Ten (10) 4 1/2" x 4 1/2" Squares
- Four (4) 14 1/2" x 14 1/2" Rectangles
- One (1) 12 1/2" x 4 1/2" Rectangle

Fabric G

- Eight (8) 1 1/2" X WOF (Binding)

CONSTRUCTION

Sew all rights sides together with 1/4" seam allowance.

HST Construction:

- Start with the construction of the HST's
- To accomplish the HST construction take the 4 7/8" squares from fabrics **A, B, C, D, E**, and pair them with 4 7/8" squares from fabric **F**.
- You will end up with eight (8) HST of each combination

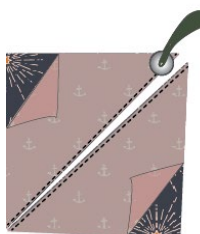
Note: Pay attention to orientation of fabric **A, B, D** and **E** as you assemble this quilt.



Place the two squares right side together and mark a diagonal line on the wrong side of each square



Sew a 1/4 on both sides of the marked diagonal line



Using a rotary blade cut the square into two triangles

This Quilt is made out of four blocks.

Block 1 Construction

- Sew one (1) E/F HST to one (1) 4½" x 10½" fabric **F** (Repeat one more time)

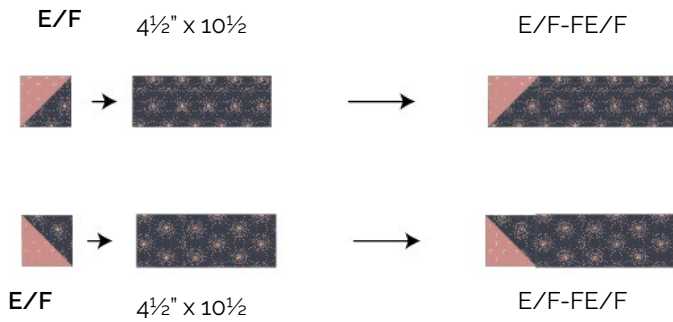


DIAGRAM 2

- Attached one E/F-F to the bottom side of one (1) 14½" x 14½" Square from fabric **F**

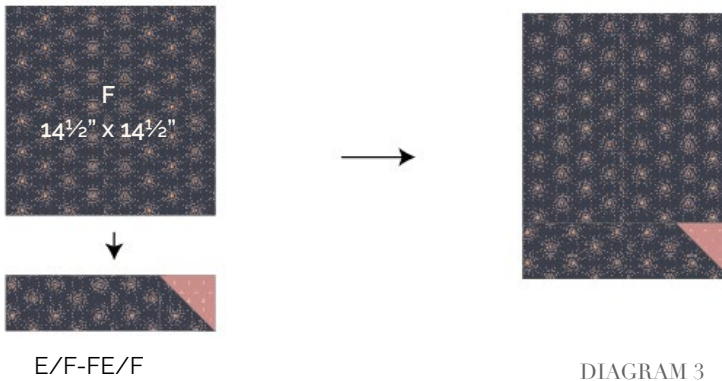
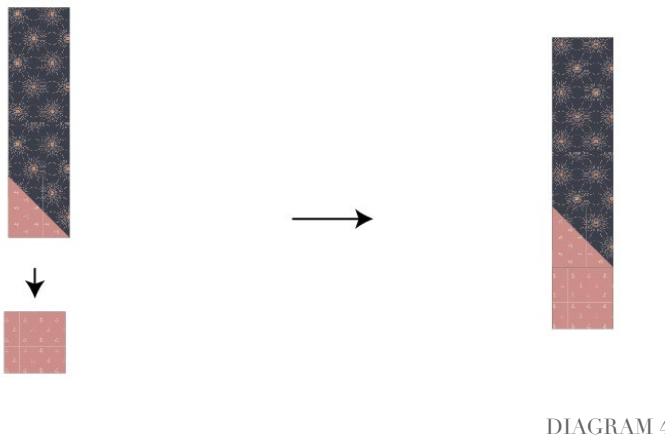
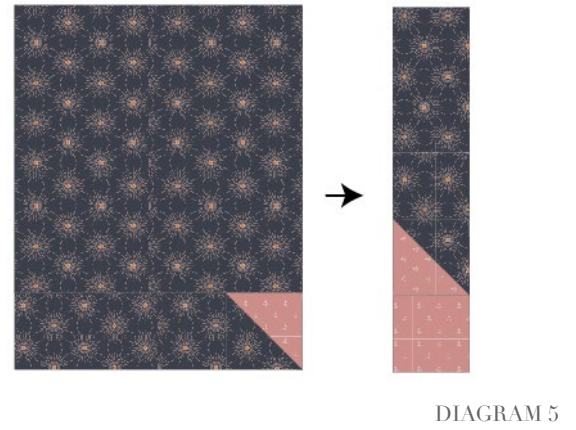


DIAGRAM 3

- Attached the other E/F-F to a 4½" Square from fabric **E** and sew the two pieces together. (See diagram below for reference)



- Sew E/F-F-E to Block 1



- Attach a 8½" x 4½" rectangle from fabric **F**, with F/D HST and a 10½" x 4½" rectangle from fabric **D**

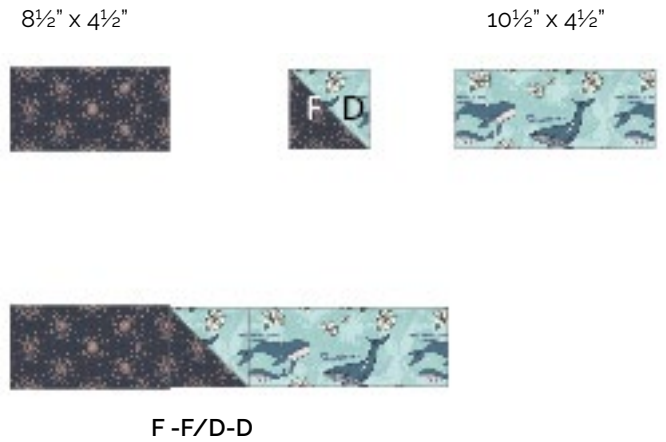


DIAGRAM 6

- Attach a 6½" x 4½" rectangle from fabric **D**, with F/D HST and a 8½" x 4½" rectangle from fabric **F**

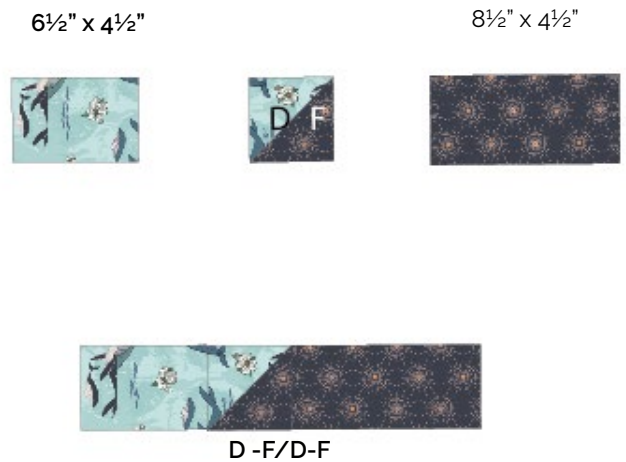
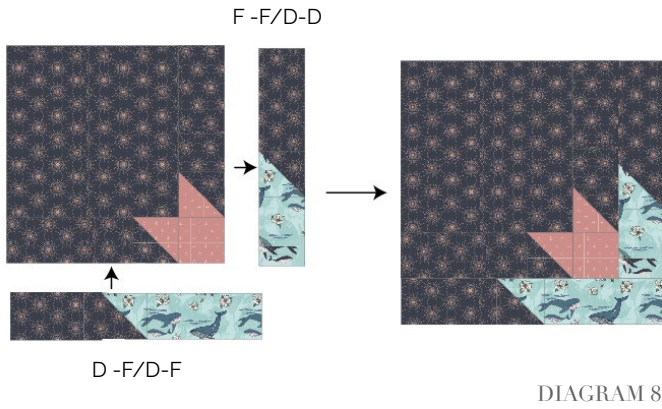
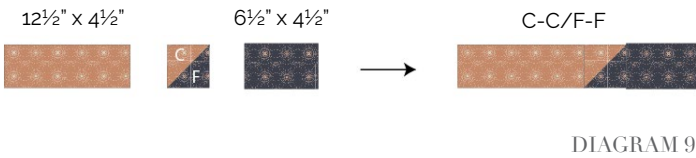


DIAGRAM 7

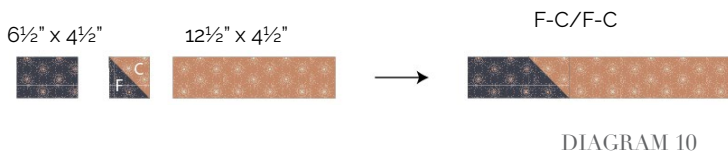
- Attach D-F/D-F to the side and F-F/D-D to bottom of Block 1. See diagram below.



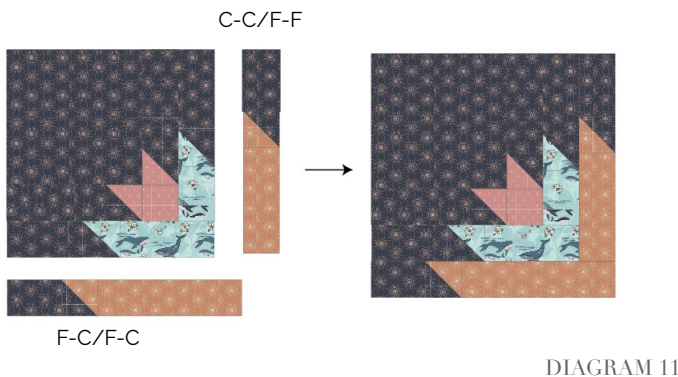
- Attach a $12\frac{1}{2}$ " x $4\frac{1}{2}$ " rectangle from fabric C, with C/F HST and a $6\frac{1}{2}$ " x $4\frac{1}{2}$ " rectangle from fabric F



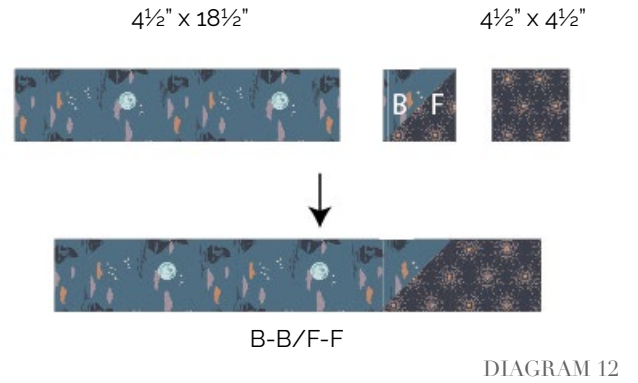
- Attach a $6\frac{1}{2}$ " x $4\frac{1}{2}$ " rectangle from fabric F with one C/F HST and $16\frac{1}{2}$ " x $4\frac{1}{2}$ " rectangle from fabric C.



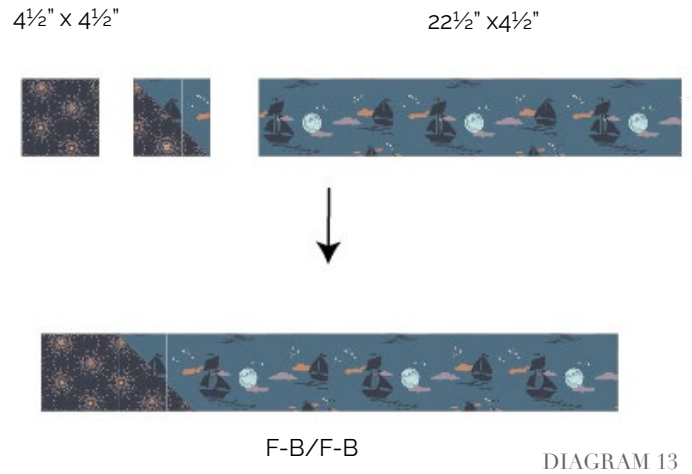
- Attach C-C/F-F to the side of Block 1 and F-C/F-C to the bottom (See diagram below and pay attention to the direction of the HST and fabric direction)



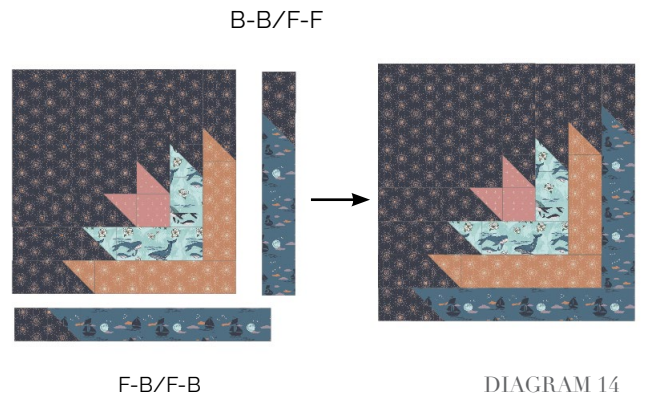
- x
- Attach a $4\frac{1}{2}$ " x $18\frac{1}{2}$ " rectangle from fabric B with B/F HST and a $4\frac{1}{2}$ " x $4\frac{1}{2}$ " square from fabric F.



- Attach a $4\frac{1}{2}$ " x $4\frac{1}{2}$ " square from fabric F with B/F HST and a $22\frac{1}{2}$ " x $4\frac{1}{2}$ " rectangle from fabric B



- Attach B-B/F-F to the side of Block 1 and F-B/F-B to the bottom (See diagram below and pay attention to the direction of the HST and fabric direction)



- Attach a 24½" x 14½" rectangle from fabric **A** with A/F HST and a 2½" x 4½" rectangle from fabric **F**

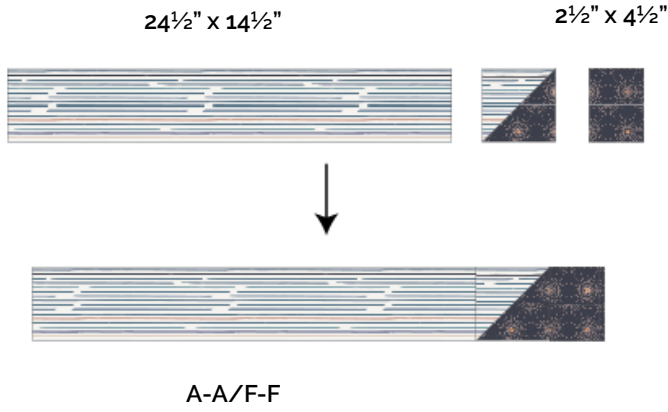


DIAGRAM 15

- Attach a 2½" x 4½" rectangle from fabric **F** with A/F HST and a 28½" x 4½" rectangle from fabric **A**

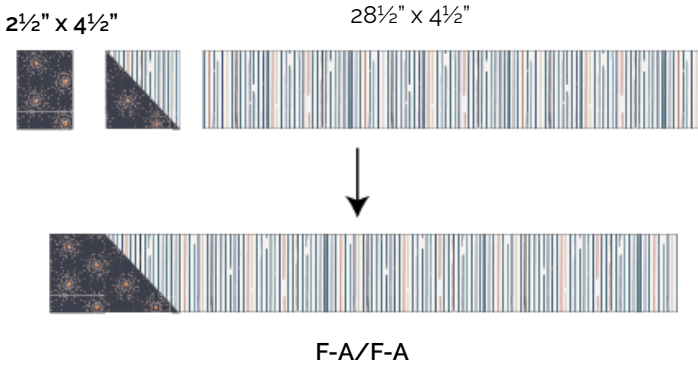


DIAGRAM 16

- Attach a 2½" x 4½" rectangle from fabric **F** with A/F HST and a 28½" x 4½" rectangle from fabric **A**

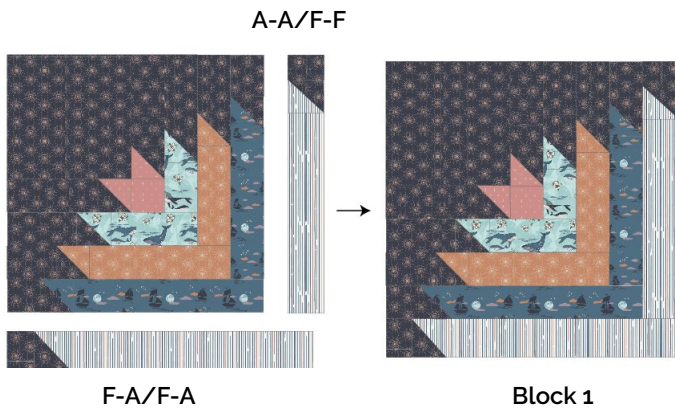


DIAGRAM 17

Block 2

- To construct Block 2 sew the same set of pieces but reflecting the previous piece Horizontally as show in the diagram below. Note: pay attention to the direction of fabrics **A,B,D,E**

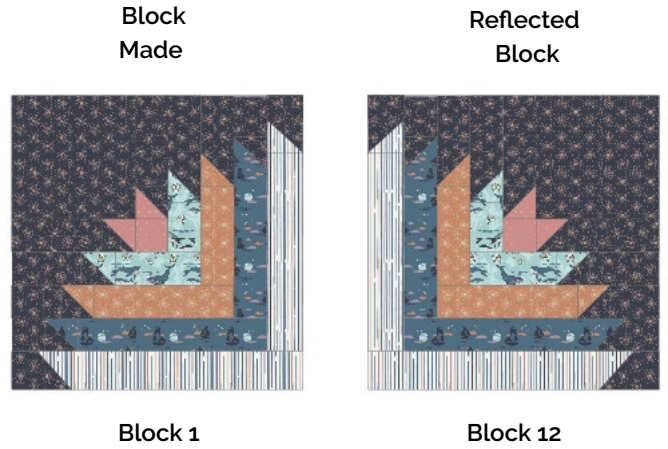


DIAGRAM 18

Block 3

- To construct Block 3 sew the same set of pieces but reflecting Block 1 Verically as show in the diagram below. Note: pay attention to the direction of fabrics **A,B,D,E**.



DIAGRAM 19

Block 4

- To construct Block 4 sew the same set of pieces but reflecting Block 3 Horizontally as show in the diagram below. Note: pay attention to the direction of fabrics **A,B,D,E**

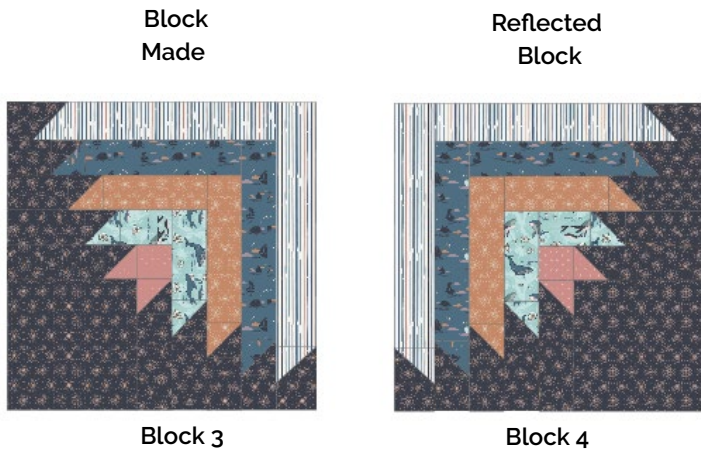


DIAGRAM 20

- Attach a $4\frac{1}{2}'' \times 4\frac{1}{2}''$ square from fabric **F** with a $30\frac{1}{2}'' \times 4\frac{1}{2}''$ rectangle from fabric **E**

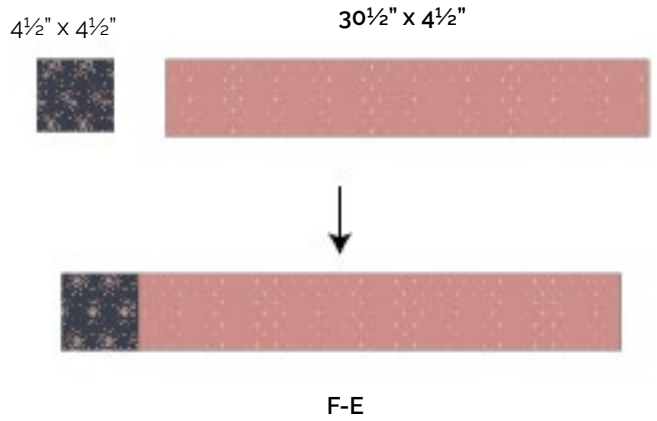


DIAGRAM 23

- Attach a $30\frac{1}{2}'' \times 4\frac{1}{2}''$ rectangle from fabric **E** with $4\frac{1}{2}'' \times 4\frac{1}{2}''$ square from fabric **F**

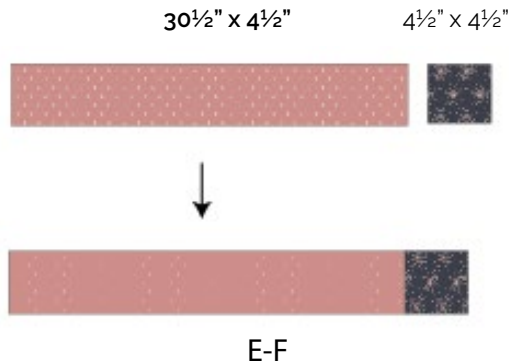


DIAGRAM 21

- Attach F-E to the top of Block 4

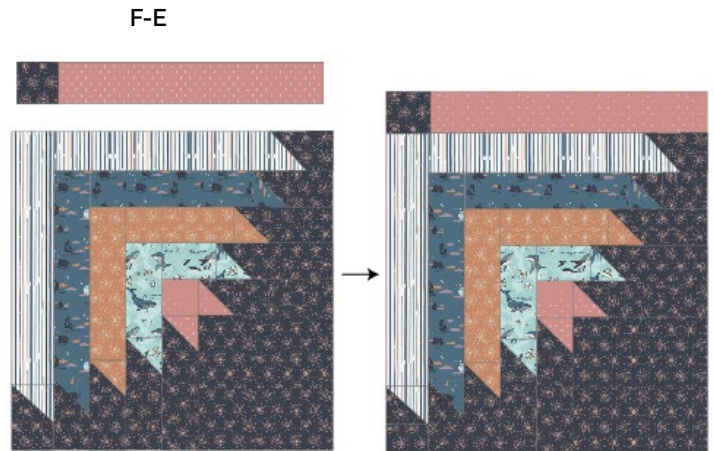


DIAGRAM 24

- Attach E-F to the bottom of the block 1

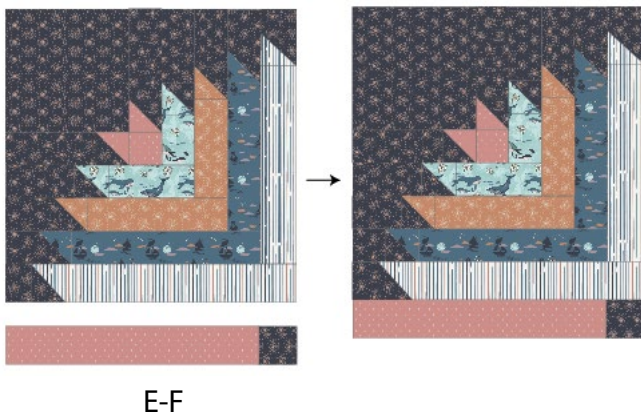


DIAGRAM 22

- Attach $30\frac{1}{2}'' \times 4\frac{1}{2}''$ from fabric **E** to a $12\frac{1}{2}'' \times 4\frac{1}{2}''$ from fabric **F** and to a $30\frac{1}{2}'' \times 4\frac{1}{2}''$ from fabric **E**.

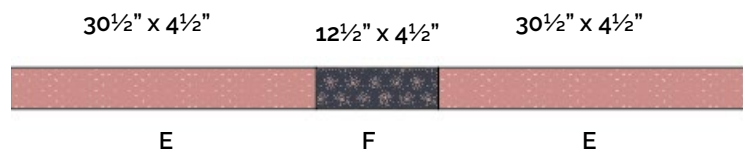


DIAGRAM 25

- Sew Block 1 with Block 3 and Block 2 with Block 4.

Block 1

Block 2



Block 3

Block 4

- Sew E-F-E in between Block 1-3 and 2-4. Quilt as desire

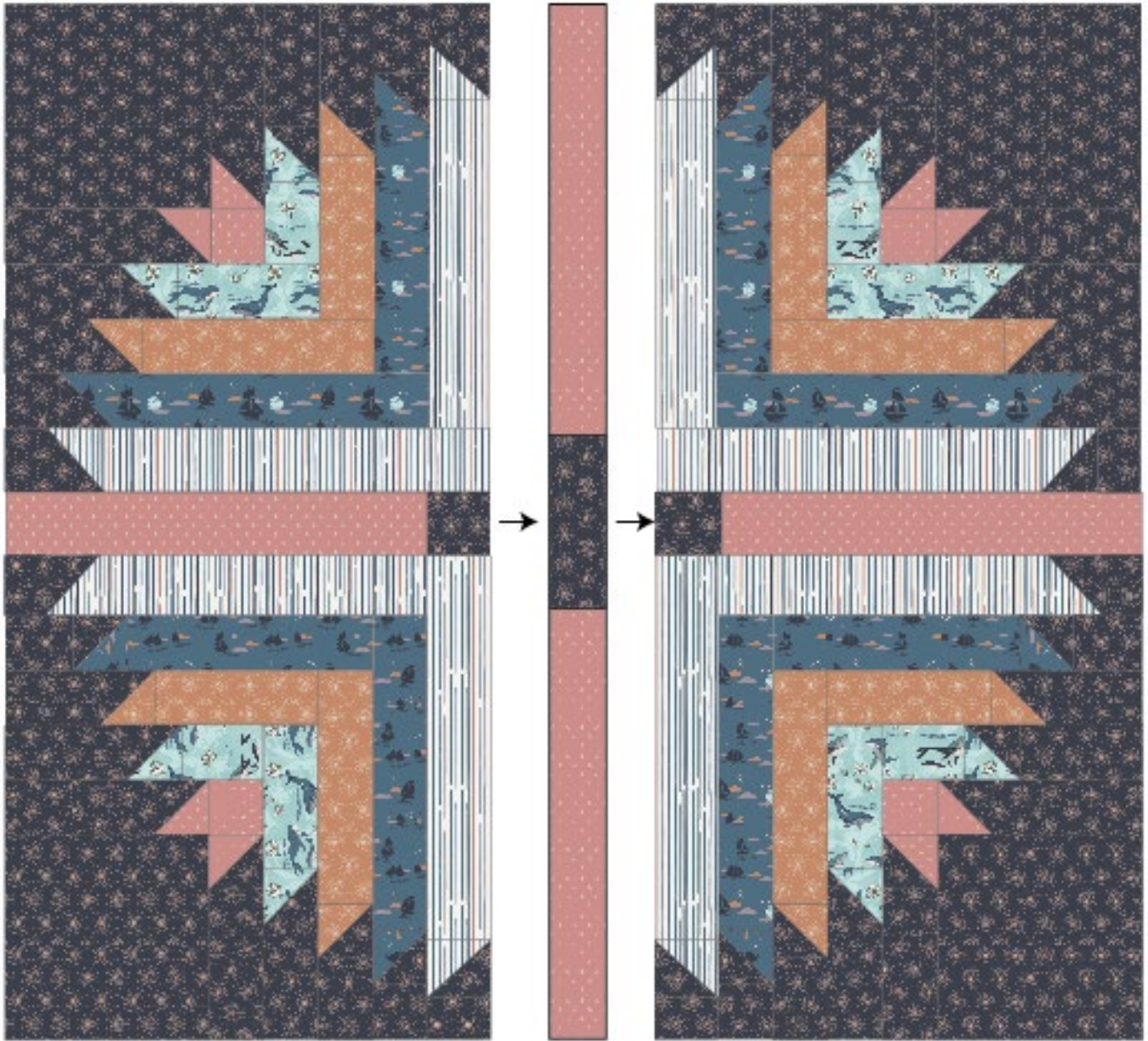


DIAGRAM 27

QUILT ASSEMBLY

Sew rights sides together.

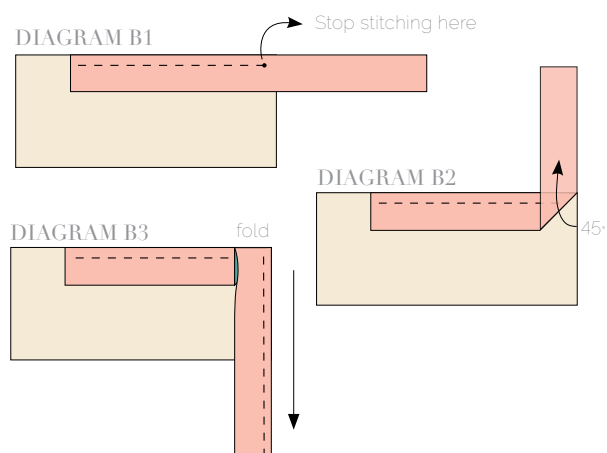
- Place BACKING FABRIC on a large surface wrong side up. Stretch it with masking tape against that surface.
- Place BATTING on top of backing fabric.
- Place TOP on top of the batting with right side facing up. Smooth away wrinkles using your hands.
- Pin all layers together and baste with basting thread, using long stitches. You can also use safety pins to join the layers.
- Machine or hand quilt starting at the center and working towards the corners. Remember that quilting motifs are a matter of personal preference. Have fun choosing yours!
- After you finished, trim excess of any fabric or batting, squaring the quilt to proceed to bind it.

BINDING

Sew rights sides together.

- Cut enough strips $1\frac{1}{2}$ " wide by the width of the fabric **L** to make a final strip 298" long. Start sewing the binding strip in the middle of one of the sides of the quilt, placing the strip right side down and leaving an approximated 5" tail. Sew with $\frac{1}{4}$ " seam allowance (using straight stitch), aligning the strip's raw edge with the quilt top's raw edge.
- Stop stitching $\frac{1}{4}$ " before the edge of the quilt (DIAGRAM B 1). Clip the threads. Remove the quilt from under the machine presser foot. Fold the strip in a motion of 45° and upward, pressing with your fingers (DIAGRAM B2). Hold this fold with your finger, bring the strip down in line with the next edge, making a horizontal fold that aligns with the top edge of the quilt (DIAGRAM B3). Start sewing at $\frac{1}{4}$ " of the border, stitching all the layers. Do the same in the four corners of the quilt.

- Stop stitching before you reach the last 5 or 6 inches. Cut the threads and remove the quilt from under the machine presser foot. Lay the loose ends of the binding flat along the quilt edge, folding the ends back on themselves where they meet. Press them together to form a crease. Using this crease as the stitching line, sew the two open ends of the binding with right sides together (you can help yourself marking with a pencil if the crease is difficult to see).
- Trim seam to $\frac{1}{4}$ " and press open. Complete the sewing. Turn binding to back of the quilt, turn raw edge inside and stitch by hand using blind stitch.





artgalleryfabrics.com

NOTE: While all possible care has been taken to ensure the accuracy of this pattern, We are not responsible for printing errors or the way in which individual work varies. Please read instructions carefully before starting the construction of this quilt. If desired, wash and iron your fabrics before starting to cut.

© 2019 Courtesy of Art Gallery Quilts LLC. All Rights Reserved.